

BODY TYPE: EXTRUDED ALUMINUM
TANK TYPE: DRY SIDE

DOC. NO. : E018-1 DRAWING TEMPLATE
REV. C 2017-02-05

SPECIFICATION

CHASSIS:
-FREIGHTLINER M2 112, 6X4 REGULAR CAB
-64,000 LB GVWR; 18,000 LB FRONT / 46,000 LB REAR
-DIESEL ENGINE, CUMMINS L9, 450EV HP
-AUTOMATIC TRANSMISSION, ALLISON 3000 EVS
-CHASSIS SUPPLIED ANTI ROLL STABILITY

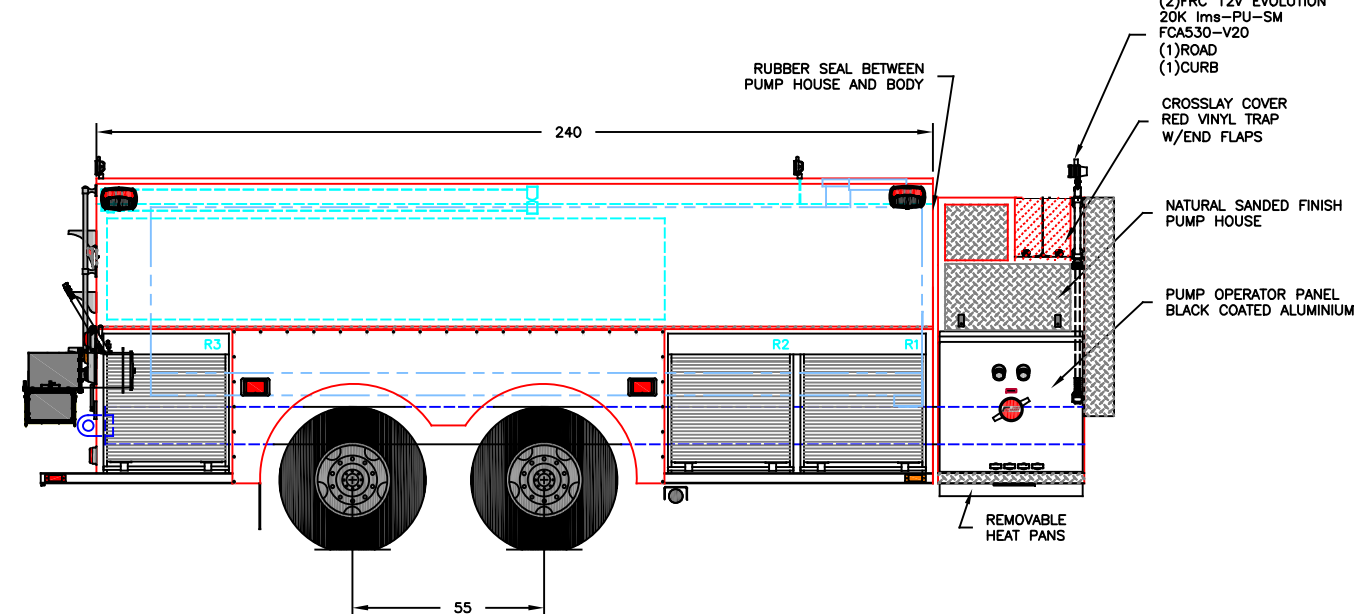
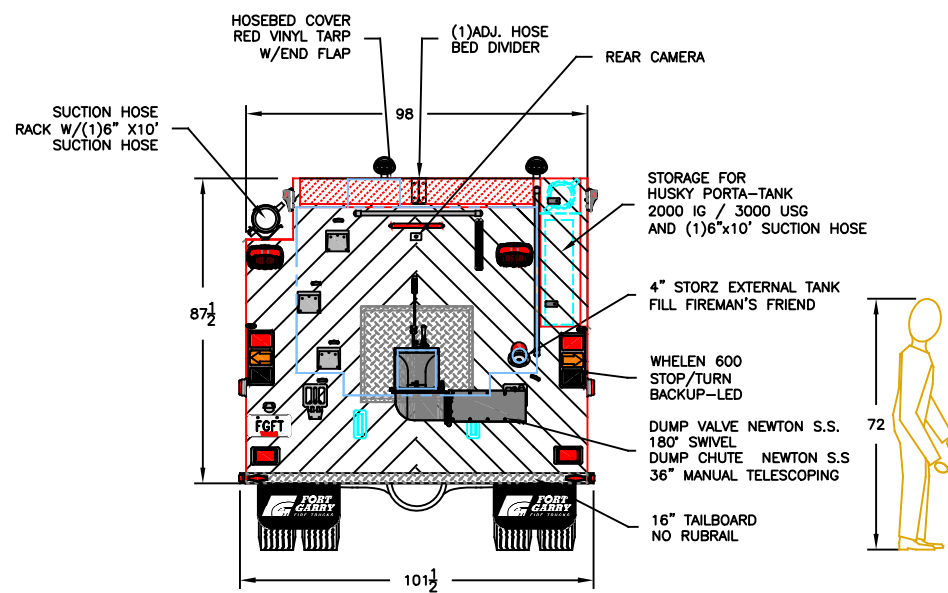
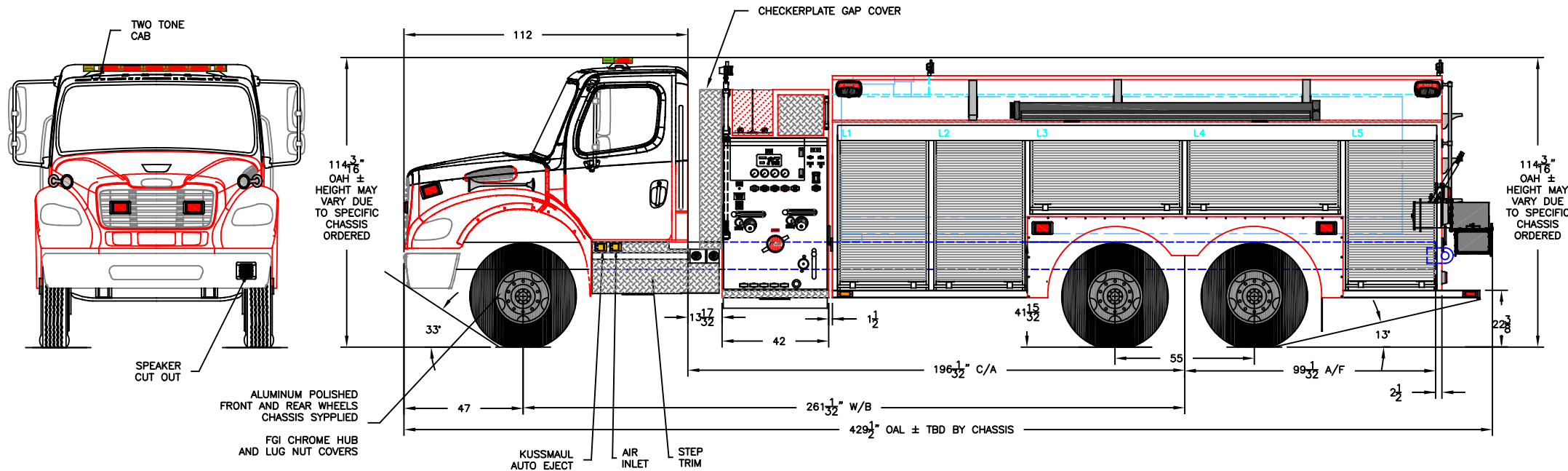
PUMP:
-HALE MIDSHIP QFLO 1250
-1250 USGPM AT 150PSI
-THIRD PARTY CERTIFICATION MEETING NFPA 1901-2016 EDITION

PLUMBING: STAINLESS STEEL SCHEDULE 10
-2 x 6" SUCTION, (1)ROAD (1)CURB
-1 x 2 1/2" GATED SUCTION, (1)ROAD
-4 x 2 1/2" DISCHARGE PORT, (2)ROAD (2)CURB
-1 x 4" STORZ EXTERNAL TANK FILL FIREMAN'S FRIEND
-2 x 1 1/2" CROSS LAYS
-4" TANK TO PUMP, W/3" BFY VALVE
-2" TANK FILL

TANK:
-3000 USG POLY

BODY:
-PUMPER TANKER ALUMINUM HIGH/LOW
-BODY UNDERCOATING - CORASHIELD

EMERGENCY EQUIPMENT/ACCESS
SEE SPECIFICATION FOR DETAILS



COMPT.	COMPARTMENT FRAME DIMENSIONS
L1	36W x 65H x 13.5/26D
L2	36W x 65H x 13.5/26D
L3	60W x 35H x 13.5D
L4	60W x 35H x 13.5D
L5	36W x 65H x 13.5/26D
R1	36W x 40H x 13.5/26D
R2	36W x 40H x 13.5/26D
R3	36W x 40H x 13.5/26D

- NOTES:**
1. THE DRAWING IS FOR REFERENCE PURPOSE, ONLY. THE DRAWING MAY OR MAY NOT SHOW ALL ITEMS AS DESCRIBED IN THE WRITTEN DETAILED SPECIFICATION.
 2. INCLUSION OF AN ITEM ON THE DRAWING DOES NOT CONSTITUTE INCLUSION OF THAT ITEM WITH THE FINAL DELIVERY OF THE UNIT. SPECIFICATION SHALL BE FINAL AUTHORITY TO BE DETERMINED WHAT IS SUPPLIED ON THE APPARATUS.
 3. THE EFFECTIVE DOOR OPENING FOR ROLLUP DOORS WILL BE REDUCED APPROX. 10" IN HEIGHT, 2" IN DEPTH AND 2" IN WIDTH FROM SHOWN FRAME OPENINGS AND 2" IN HEIGHT, 3" IN DEPTH AND UP TO 4" IN WIDTH FOR PAN DOORS. DIMENSIONS TOLERANCE ± 1/4"
 4. PUMP RATING AND TANK CAPACITY ARE SHOWN AS NOMINAL VALUES. THE ACTUAL VALUES MAY VARY.
 5. CHASSIS GVWR SHOWN IS THE MINIMUM REQUIRED FOR STANDARD BODY DEPENDING OF OPTIONS, GVWR MAY NEED TO BE INCREASED.
 6. COMMERCIAL OEM CAB STEPS MAY NOT MEET ULC STANDARD. SELECT CUSTOM STEPS WHEN REQUIRED
 7. OVERALL HEIGHT IS IN LOADED CONDITION, UNLOADED HEIGHT MAY BE 4" ABOVE HEIGHT SHOWN. AFTER TRUCK IS COMPLETED ADDITIONAL STEPS MAY BE REQUIRED TO MEET THE STANDARD.
 8. DIMENSIONS SHOWN ARE APPROXIMATE AND ARE SUBJECT TO CHANGE AS MAY BE FOUND NECESSARY DURING DESIGN. DO NOT SCALE DRAWING.
 9. MINOR DETAILS AND REFLECTIVE STRIPING ARE NOT SHOWN.

THIS DRAWING IS PROPERTY OF FORT GARRY FIRE TRUCKS LTD (FGFT) AND MUST NOT BE COPIED OR REPRODUCED IN WHOLE OR IN PART, BY ANY METHOD WHATSOEVER, WITHOUT AUTHORIZATION OF FGFT.

B	REVISED QUOTE DRAWING	SP	08 DEC 2021
A	QUOTE DRAWING	SP	18 NOV 2021
REV	DESCRIPTION OF CHANGE	BY	DATE

FORT GARRY
FIRE TRUCKS
WWW.FGFT.COM
WINNIPEG, MANITOBA, CANADA 1-800-565-3473

DESCRIPTION:	PRATTSVILLE		
SCALE:	1:55	DWG. BY:	SP
		CHK. BY:	

MODEL:	APTTS25H5	SHEET:	1 OF 1
DATE:	18 NOV 2021	DWG. NO. :	21DM14